

# QML<sup>®</sup> Reporting Summary

TELCOR Report Plug-ins are constructed using new rapid development architecture, enhancing the current QML reporting features.

QML is designed to operate as an online, real-time, paperless and exception-based system, allowing each customer to configure their exceptions and generate as many hardcopy reports as individual workflow requires.

From within QML, a report can be generated from any of the following functions:

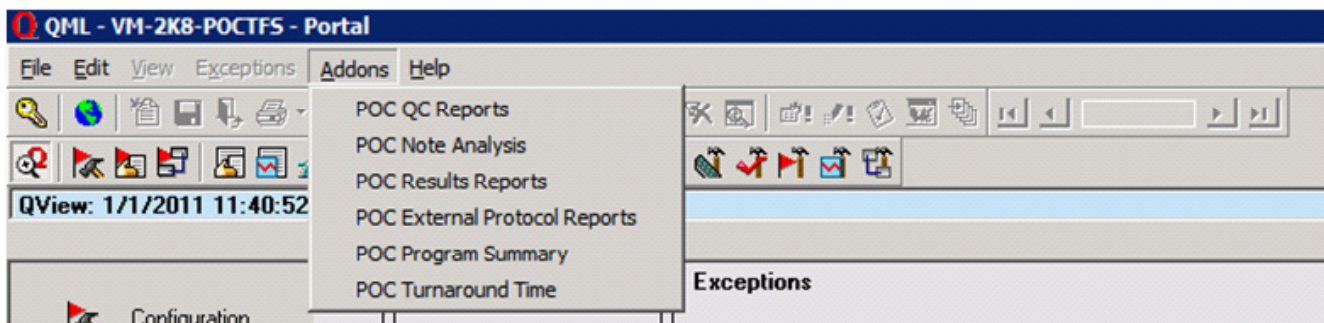
- Result Exceptions
- Interface Exceptions
- Result Repository to include Levey Jennings Graphs and Statistics, Result Summary and Detail
- QA Statistics
- Utilization
- Operator Reports to include Operators Due and Overdue for recertification, Operator Lists by certified device types, All operators and Operators assigned testing privileges for devices that can accept electronic operator lists
- Device Summary with all active devices, their assigned location, last upload status, etc.
- Logs to include Auto-recertification Log, Edit Log, Error Log, Event Log, Exception Log and Overdue Device Log

When displaying results from the Result Repository, data can also be exported directly from the summary grid for integration into a variety of applications such as Word, Excel, Access, etc. through:

- Comma separated files
- XML files for fast and simple importing into Excel

## Report Plug-in Module

This module consists of reports each architected as a standalone component using the existing QML database, Filter function for selection of the data subset and unique report parameters. Each report can be generated either from an icon on the desktop or the Addons menu within QML. This architecture enables rapid report development and installation independent of a QML version release or anything else on the Addons menu.



Plug-in reports are provided at no additional cost as part of the software support agreement in addition to new device type drivers, updates to existing drivers and new versions of QML. The list of reports will continue to grow based on customer requests.

## QC Reports

How are you tracking the performance of your devices? This report includes selection from three (3) different Logs (liquid QC results by Device within location, by Operator within location, by date/time) or a QC Summary report. The QC Summary can be generated by device, location or facility and provides a total sample count, lowest and highest values, mean, SD and CV for samples in control (selection between 2 or 3 SD). The same data is then provided for all samples and includes a count of samples above and below those in control.



# QML<sup>®</sup> Reporting Summary

## Note Analysis

Have you ever wondered the percent of your samples that don't get reported due to invalid patient IDs or your repeat rate? This report is generated by either location or operator and provides total sample counts and then counts and a percentage for each, up to five notes selected. These notes can be from those entered on the device (device comments), those automatically generated by the device (device messages) or any note entered by a QML operator or automatically generated by QML.

## Results Reports

Do you want to send exception reports to each of your nurse managers or a report of glucose results outside your acceptable ranges? This report is generated by location and provides a list of either samples held in selected Exception categories or those in the Result Repository. The Exception categories include Invalid Patient IDs, Repeat samples, Patient Result exceptions with either exceptionable device flags or result values and Configuration exceptions. Data on the report for each applicable sample includes the sample ID, sample date/time, operator name, device ID, test, device flag, result value, exception text and any operator entered or device generated messages.

## Protocol Reports

How are you managing your glucose? This report is a statistical analysis tool that provides a location summary and then separate reports by test for each location to include the following categories:

- Total count of samples with mean, median and SD
- Total count of samples and percent of results that fall into each of the result ranges defined in the selected protocol
- Optional bar graph for each location comparing that locations' results to assigned facilities' results
- Optional Patient Days and Patient Stay detail to include for each patient (ID and name) by date and stay; count of results, highest and lowest value, mean, median, SD, percent in control, indicator if results for each day are from multiple locations (e.g., patient transferred to different locations within the same day)

## Program Summary

Have you ever been asked about the magnitude of your program? This report provides a summary at either the facility or location level by device type and optional disposable type (e.g., individual cartridge) and includes sample and out of range counts for both liquid QC (AQC) and electronic QC (EQC), patient sample and result counts, a count of samples with the optionally selected note (e.g., invalid patient IDs), count of active devices and active certified operators.

## Turnaround Time

Have you ever been asked to define how long it takes to report point of care results to the LIS/EMR? This report is generated by either the operator or location and provides a count of samples excluded by a defined note (e.g., invalid patient ID), count of total samples and then a count and percent of the total samples that fall within each of the up to five defined time ranges.

## Plug-in Reports Soon to be Released

- Sample Log with Operator Comments to show documentation of actions taken for each sample
- Device Summary for each device by test and reagent lot with counts of patient tests and each level of QC performed with mean, SD, CV and percent in control
- Location Summary with options for operator summary, samples with invalid sample IDs, patient and QC outliers

Regardless of the report, either from within QML or a Report Plug-in with embedded Crystal, the report will first print to screen and then provide the following output options:

- Print to printer
- Print to fax
- Save to disk with format options such as comma delimited, Excel, Word, PDF, etc.
- Attach to an e-mail directly from QML if using Microsoft<sup>®</sup> Outlook

**TELCOR**, an employee owned company founded in 1995, is an industry leader in the laboratory point of care and outreach/reference lab markets, providing unparalleled software products and services and exceptional customer support. TELCOR's proven implementations are performed by clinically experienced, IT knowledgeable resources who understand each customer's unique environment.



All TELCOR applications have been built with current Good Manufacturing Practices (cGMP) and TELCOR is a Microsoft<sup>®</sup> Gold Certified Partner. Microsoft, Microsoft Excel and Microsoft.NET are either registered trademarks or trademarks of Microsoft Corporation in the United States and other countries.

## TELCOR's Commitment to Security and Compliance

TELCOR is committed to remaining compliant and maintaining the compliance of its products with all new and upcoming federal regulations for billing including, but not limited to, HIPAA, the HITECH Act and ICD-10.

Copyright 2011 TELCOR Inc. All rights reserved. Updated: January 2011 POC-Reporting-010411

[www.telcor.com](http://www.telcor.com) • 402-489-1207

